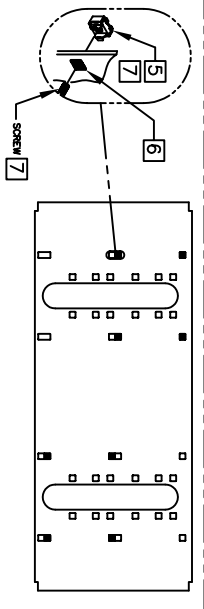
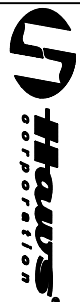
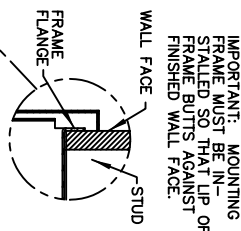
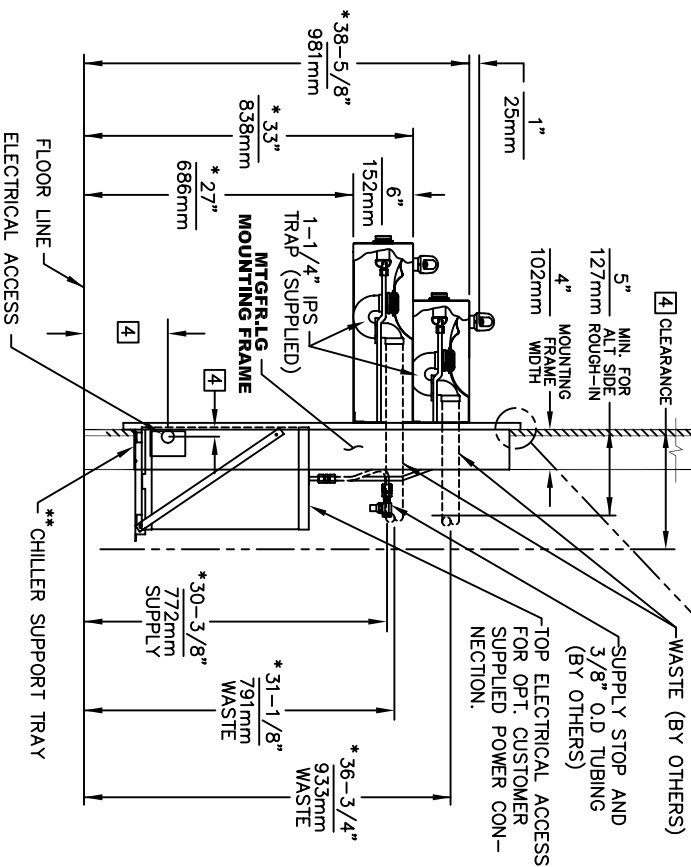


BOWL MOUNTING PATTERN DETAIL



NOTES:

1. HOLD ROUGH-IN DIMENSIONS $\pm 1/8"$ (3.2mm)
2. *THIS IS A DUAL PURPOSE WHEELCHAIR ACCESSIBLE DRINKING WATER FACILITY. WHEN INSTALLING THIS UNIT, LOCAL, STATE OR FEDERAL CODES SHOULD BE ADHERED TO. FOR DIFFERENT INSTALLATION HEIGHTS OTHER THAN SHOWN, DIMENSIONS MARKED (*) MUST BE ADJUSTED ACCORDINGLY.
2. **ALIGN HOLES IN CHILLER SUPPORT TRAY WITH HOLES IN FRAME CROSSPIECE AND FASTEN WITH #10 SHEET METAL SCREWS.
3. REFER TO 5874/VRK5874 OPERATION AND MAINTENANCE MANUAL FOR PUSH BUTTON AND VALVE INSTALLATION/MAINTENANCE INSTRUCTIONS.
4. REFER TO MTGR.LG INSTALLATION DRAWING FOR ROUGH-IN DIMENSIONS.
5. INSERT 5/16"-18 PANEL INSERTS FROM OPPOSITE SIDE AT LOCATIONS SHOWN. 5/16" DIA. HOLES (HOLE COMBINATIONS SHOWN ARE FOR USE WITH LOW FOUNTAIN ON THE RIGHT AND THE HI FOUNTAIN ON THE LEFT. USE OPPOSITE HOLES FOR HI ON RIGHT AND LOW ON LEFT).
6. HOLE COMBINATION SHOWN BELOW IS FOR USE WITH LOW FOUNTAIN ON THE RIGHT AND HIGH FOUNTAIN ON THE LEFT. USE OPPOSITE HOLES FOR HIGH ON RIGHT AND LOW ON LEFT.
7. TO CHANGE FOUNTAIN MTG. SCREW LOCATIONS: FIRST REMOVE SCREWS AND THEN SQUEEZE CLIPS ON NUT RETAINER TO POP OUT. SNAP INTO NEW POSITIONS AND RE-ASSEMBLE SCREWS.
8. IMPORTANT: A L.H. LOW (OPTIONAL) CONFIGURATION WILL REQUIRE A DIFFERENT BACK PANEL AND THE WASTE AND SUPPLY DIMENSIONS SHOWN (*) MUST BE REVERSED.



INFO FAX : 1-888-FAX-HAWS (1-888-329-4297)
1455 Kleppe Ln, Sparks NV, 89431
Phone: 775-359-4712 Fax: 775-359-7424
Haws Ag Bachweg 3 CH-3401 Burgdorf Switzerland
Haws Mfg Pte Ltd 74 Sungei Kadut Loop Singapore 729531
e-mail: Haws@hawsco.com website: www.hawsco.com

FORM NO.	REVISED PER	BY	MODEL(S):
CON-3889	CON-3889	H.M.	H1119.8
DATE:	DATE:	DATE:	DATE:
09/98	09/98	09/98	09/98
APPROVED:	APPROVED:	APPROVED:	APPROVED:
SCALE: 1/16	SCALE: 1/16	SCALE: 1/16	SCALE: 1/16
DRAWING TYPE:	DRAWING TYPE:	DRAWING TYPE:	DRAWING TYPE:
INSTALLATION/FAKBACK	INSTALLATION/FAKBACK	INSTALLATION/FAKBACK	INSTALLATION/FAKBACK
PART NUMBER:	PART NUMBER:	PART NUMBER:	PART NUMBER:
0002080262.D	0002080262.D	0002080262.D	0002080262.D
REVISION NUMBER:	REVISION NUMBER:	REVISION NUMBER:	REVISION NUMBER:
3/746A00	3/746A00	3/746A00	3/746A00
SIZE: A	SIZE: A	SIZE: A	SIZE: A
SHEET: 1 OF 1	SHEET: 1 OF 1	SHEET: 1 OF 1	SHEET: 1 OF 1